

# ✓ solar for schools

Harnessing the power of the sun to fund sustainability education for the next generation



## Survey

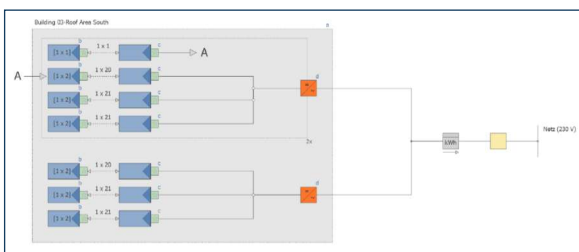
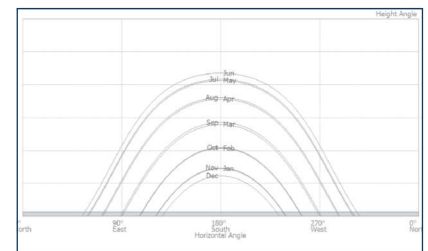
Before a solar panel system can be installed, detailed survey work is required to ensure the roofs are strong enough, there is enough space and that the design meets permitted development rules. Furthermore, we must check that the buildings will meet the EPC rating for FiT and that the system can be built within the budgeted costs to deliver the target energy production and savings. Survey work includes:

- ✓ Initial site visit where a member of our team and an installer review the site from a practical operational perspective
- ✓ Photos and documentation of the roof, access routes, electrical connection points, inverter locations and cabling routes as well as, arranging timescales and logistics with the schools management team



- ✓ Structural survey confirming the load bearing capacity and structural integrity of the chosen roof(s)
- ✓ Detailed designs including 3D roof layouts and shading assessments

- ✓ Electricity yield forecasts for the system
- ✓ Financial calculations for the project
- ✓ Energy Performance Certification assessment



- ✓ Management of application process to network operator
- ✓ Single Line Diagram (SLD) illustrating electrical connection points and cabling

We are happy to send you a price quotation for the survey of your school.  
For more information, please contact Martin Augustin, [martin@solarfuerkinder.de](mailto:martin@solarfuerkinder.de)